

A Space Odyssey 1990 to 2007

Ten Years Later ...

April 8, 2018

The Odyssey Begins with a UUA Midsized Church Conference

1990 Long Range Planning Committee Created

1992 Long Range Planning Committee Two

- Develop a “mission statement”
- Study current facilities and future needs
- Invest in Membership Committee development
- Explore going to two services

1994 Long Range Planning Committee Three

- Create four new committees to look at facilities expansion
- Hire an architect

1995 Critical Decisions

- Decided not to relocate congregation
- Architectural Plan A – expand at end of RE Wing – new building
- Begin to acquire property (417 Washington bought)

1996-99 Ministerial Transition – expansion put on hold

- 1999 Rev. Trumbore arrives & Start Up Weekend
- Expansion Restarts January 2000
- 2001 Building Expansion architectural design work restarts
- Three properties start being acquired
- 2003 Paul Mack and associates hired for fundraising study
- Mesick, Cohen, Wilson and Baker selected as architects
- 2004 Big Decision to go forward, start Capital Campaign: Build Up, Reach Out!
- 2005 Successful Campaign, financing arranged, construction firm selected
- June-July School 16 & 18 wood floor and chair recovery process
- 2006 Hurricane Katrina increases materials prices – cost overruns in bid
Schroeder \$300,000 challenge & \$100,000 match
April 5, 2006 Break Ground!
- 2007 September Building Dedication











E

S33131

JLG

AC



419

Bunkoff
GENERAL CONTRACTORS

RENTALS

DRUG-FREE
SCHOOL
ZONE

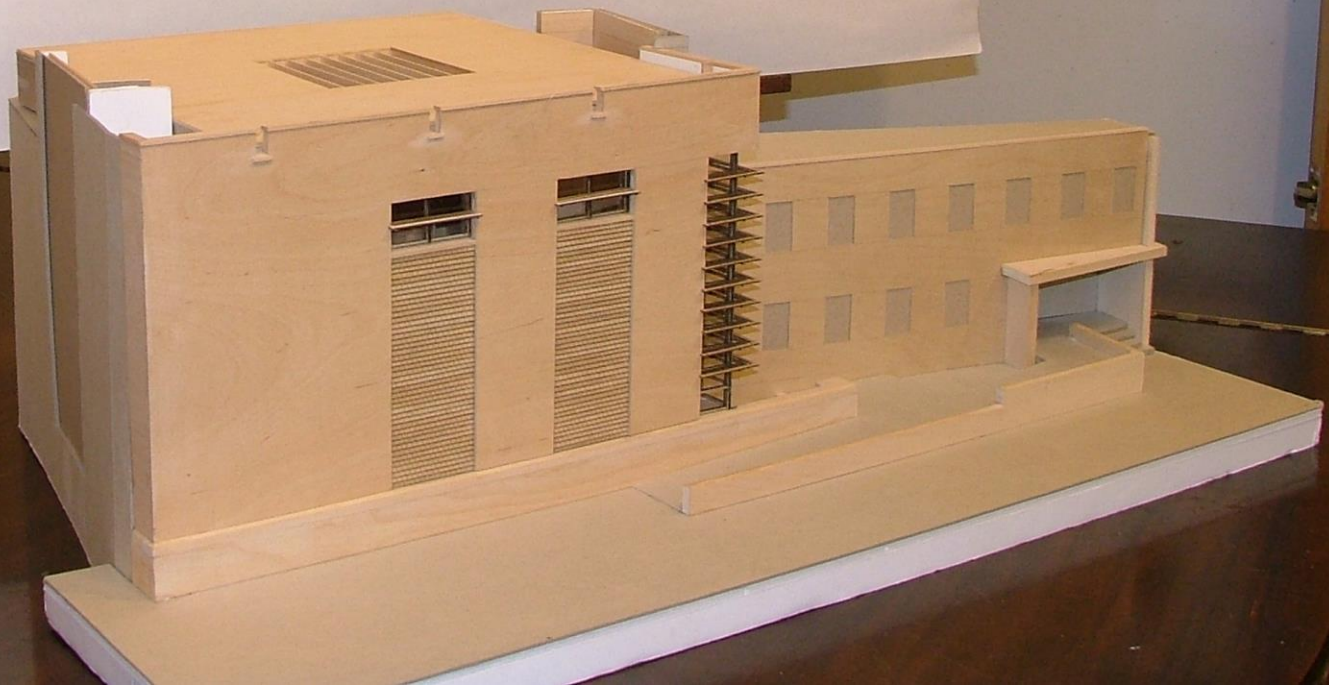
NO
PARKING
ANY
TIME







FIRST UNITARIAN UNIVERSALIST SOCIETY OF ALBANY
PROPOSED SOUTH (WASHINGTON AVE) ELEVATION
DATE: 10/18/01
DRAWN BY: [illegible]











First Unitarian Universalist Society of Albany
Building Up and Reaching Out!
Committed to Downtown Albany Since 1842

ES, INC.
EXCAVATION
3757

E70B





BCL DEMOLITION
(518) 436-3757





BCL DEMOLITION
(518) 436-3757





BCL DEMOLITION
(518) 436-3757

KOMPCO



BCL DEMOLITION
(518) 436-3757

CHAMPAGNE

6510

CHAMPAGNE
518-732-2121

USDOT-13851

COLMABEL BANKERS
PRIME PROPERTY
438-5468









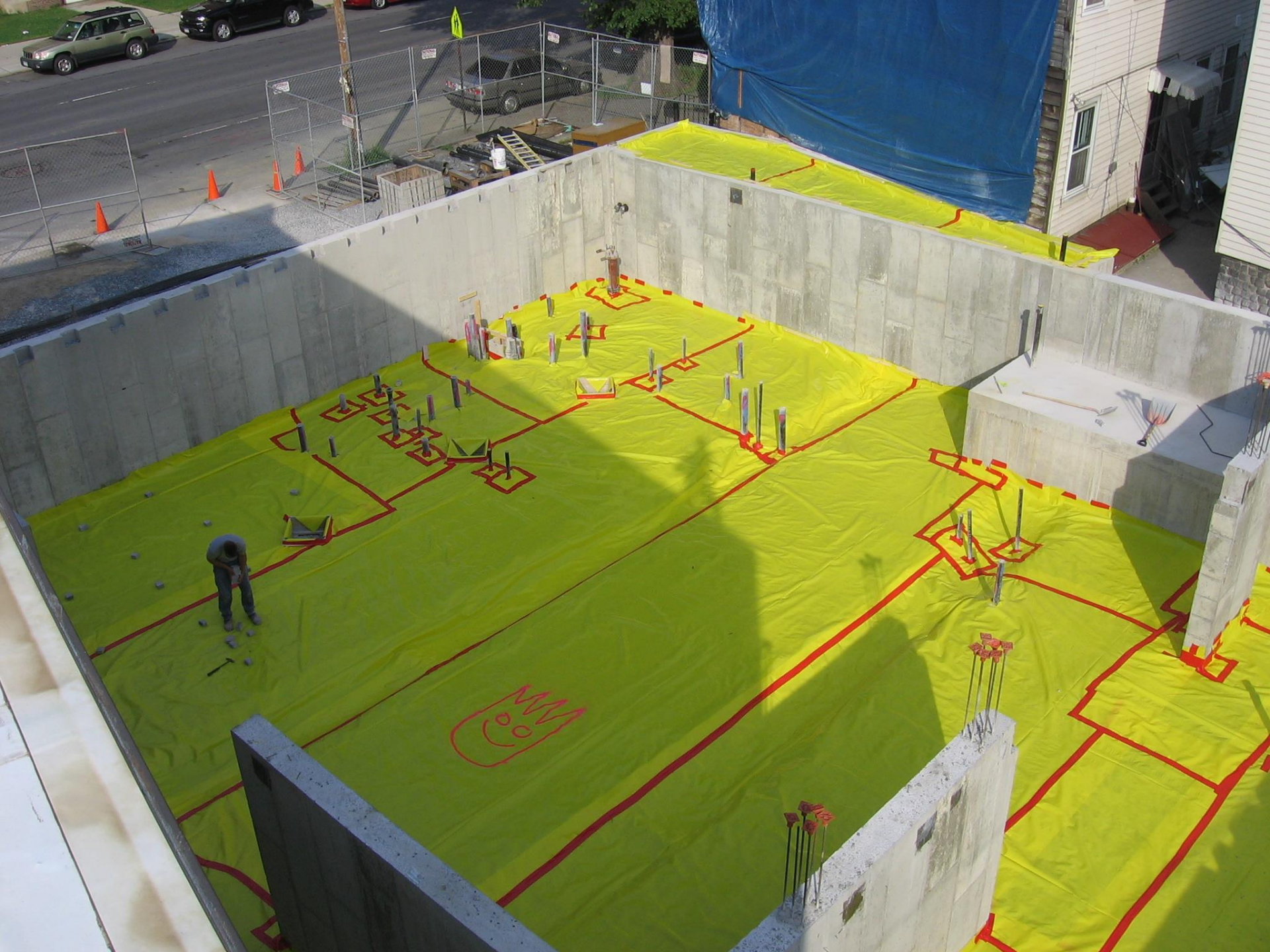
KUBOTA

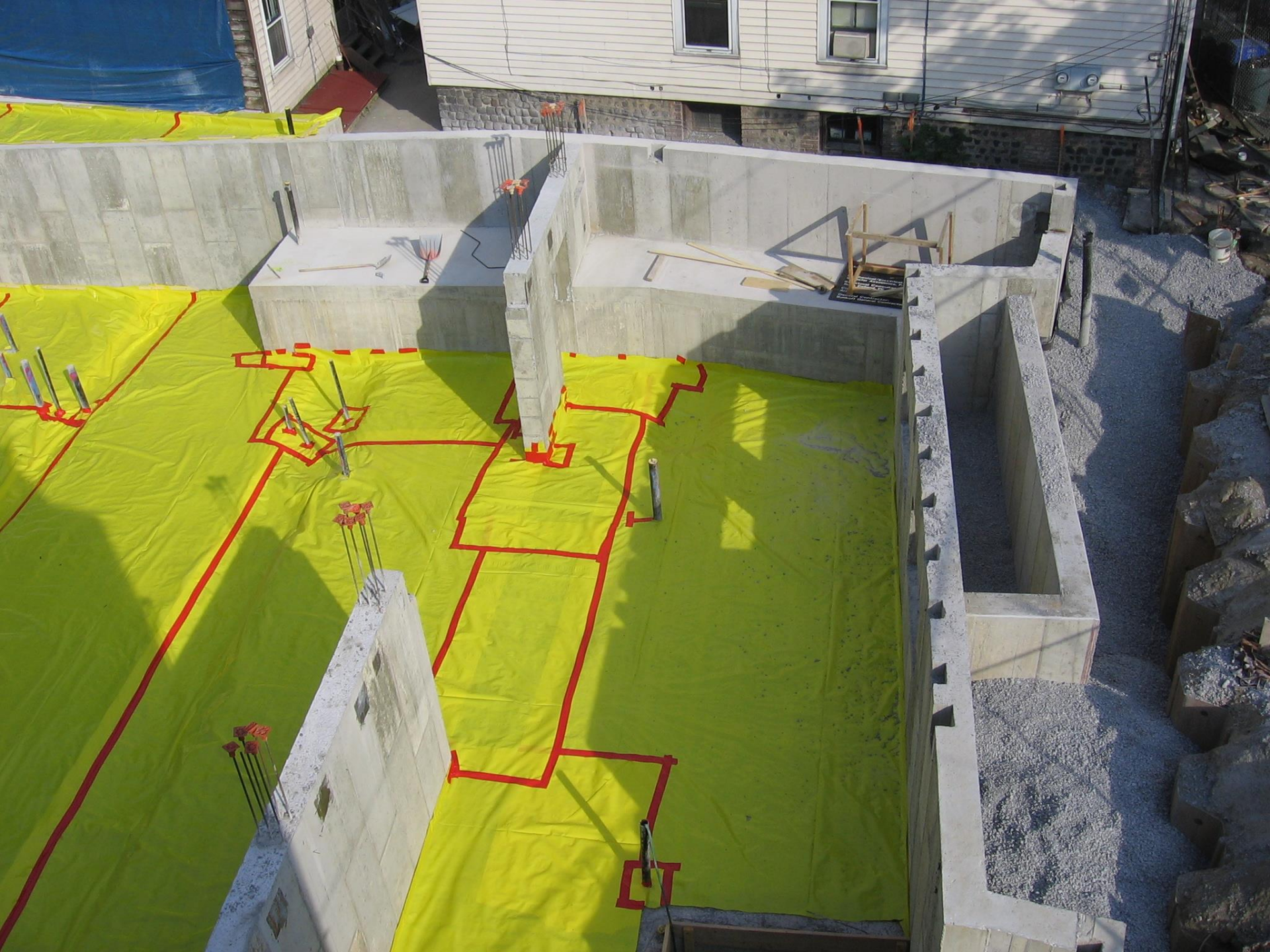
CAT

315B













Worcester Community College
Worcester, MA
Commitment to Excellence

















2007



The Albany UU Board, late
in 2017, charged the 175th
Anniversary Environmental
Committee . . .

Washington Avenue;

Improve the welcoming
nature of our building, and
our entrance from
Washington Avenue.

Our Lobby and hallways;

Recommend improvements
to our lobby and to the
hallways we walk to attend
Sunday service.

In response, the Committee, in meetings over the past three months, has developed a document we call. . .

THE PLAN





Digitized by Google

Digitized by Google

MAIN
ENTRANCE

2ND DOOR

Welcome to Albany
Unitarian Universalist

Please use main entrance.



WELCOME TO ALLIANCE
UNIVERSITY OF CALIFORNIA
←

ALLIANCE
UNIVERSITY OF CALIFORNIA

IN THIS HOUSE, WE BELIEVE:
BLACK LIVES MATTER
NO HUMAN IS ILLEGAL
SCIENCE IS REAL
LOVE IS LOVE
KINDNESS IS EVERYTHING



The Ontario Veterinary Society of Ontario
Burlington Chapter - 1100















EXIT

Community Hall

Facilities Community Hall
Channing Hall
Cafeteria
Recreation

Service
← 10:00

WE LOVE OUR NEIGHBORS
Everyone belongs here
OF ALL FAITHS

LOVE IS LOVE
Everyone belongs here
OF ALL FAITHS

Building Maps
Activities Calendar
Safety's Events
Health and Wellness
Community Events

Brochure rack containing various informational materials.

WELCOME

As a form of Welcome, - a TV screen on what we call the focus wall might, at different times display

- Upcoming Events
- Our Mission Statement ?
- Our Covenant ?



Welcome
VISITOR INFORMATION
AND MEMBERSHIP



TALENT
INVENTORY
HERE, PLEASE
and Thank You!



What time does service start? Offering envelopes?
What are Growth Groups? Where can I get coffee?
How can I get involved? What denomination is the Vineyard?
Where do we take our kids? Sign-ups?
Where are the restrooms? How do I become a member?

info
desk





Coat
Room

Rest
Rooms



To Community
Hall



Welcome



 Coat Room

 Community Hall

EXIT
With Access Device



The Love You
Feel Here
Is Love
- Rev. Robert Smith

The Love You
Feel Here
Is Love
- Rev. Robert Smith









What's Next?

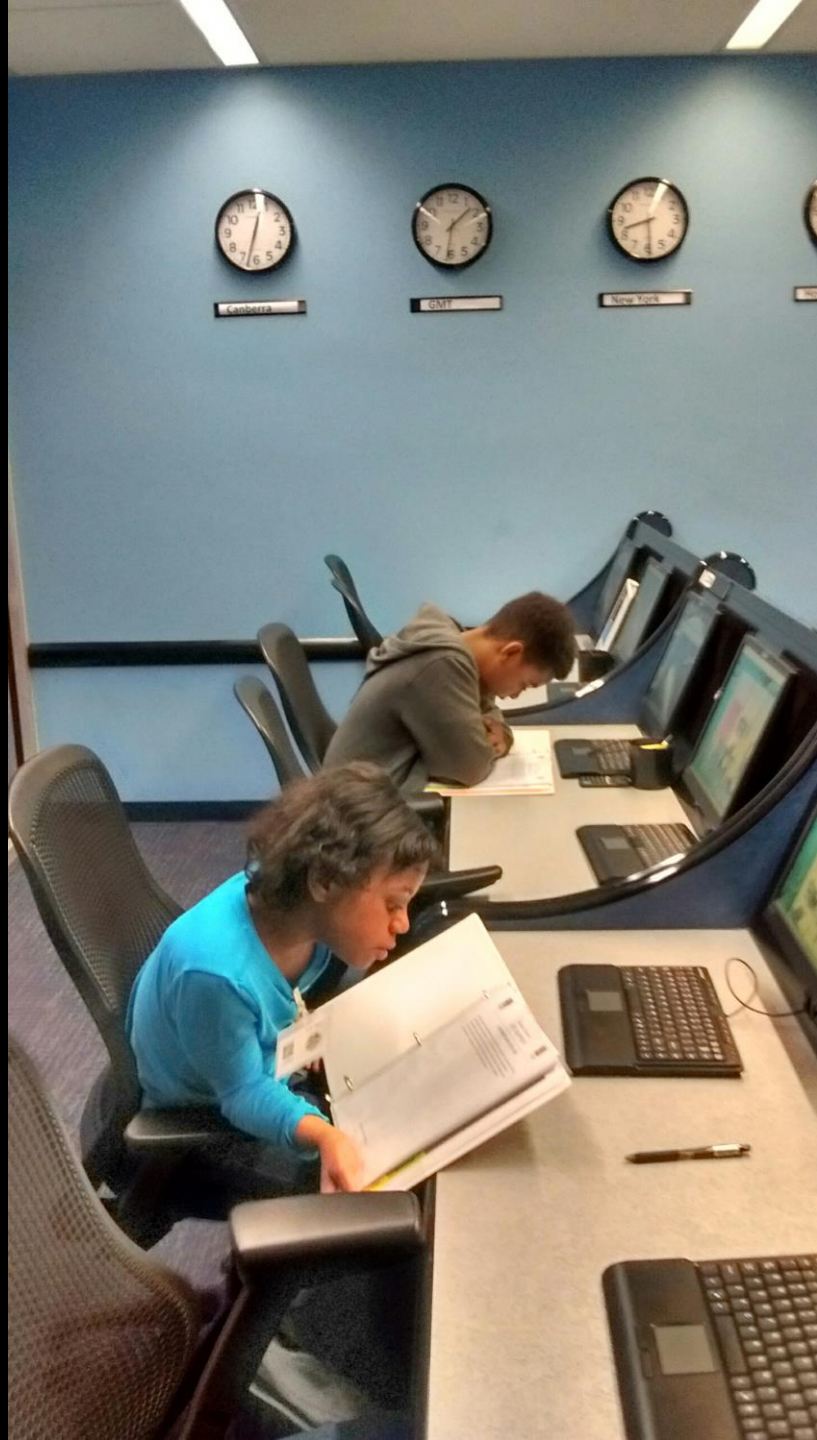
Let us know what
YOU think
should be next!

Give Away the Plate

Sheridan Preparatory Academy

Chuck Manning





Houston

JPL

