

We welcome everyone. Our Unitarian Universalist community seeks truth and deeper meaning, pursues justice through inspired action, and cultivates compassion and love for all connected by the web of life. *Mission statement, adopted May 18, 2014*

Programs for Children and Youth

Programs for Children and Youth **today, 12/7.**

Family Chapel is today! On the first Sunday of the month from October-May, Family Chapel is presented in the Sanctuary at 9:30AM and lasts for around 20-25 minutes. **Sunday morning groups begin at 10AM** on Family Chapel Sundays, and the groups use the extra time to enjoy a snack together. Childcare (Nursery/Toddler) opens at the usual time of 9:45 upstairs in Room 22.

If you are new or visiting, and your child isn't registered, please accompany them to their room to sign them in. If you aren't sure where to go, there is someone to ask at the "RE" Office Window in the lobby. **Groups run until 11:15**, at which time parents and guardians pick up their children and youth up to and including 8th grade. High school youth are released on their own.

Solstice Pageant Role Selection is also today in Room 26. If your child would like to take part, drop in anytime between 11:15-11:45 to learn about the pageant and fill out a very short form. Pageant is presented at the 10AM service on Sunday, 12/21.

If you are interested in helping out, or you would like to ask about our programs, please email the Director of Programs for Children & Youth at dre@albanyuu.org.

Worship Theme for December: Light

Albany Unitarian Universalist

Rev. Ann Kadlecek, Interim Minister

Elizabeth Baldes, Director of Programs for Children and Youth

Olga Martinez, Director of Music Ministry

Sophia Garder, Administrator

Ben Warner, Tech Support

405 Washington Avenue, Albany, New York • AlbanyUU.org

Contact us: 518.463.7135 • office@albanyuu.org



Image by JLK_254

Darkness Holds It All

Rev. Ann Kadlecek

**Peter Brown,
Worship Associate**

Albany Unitarian Universalist

Sunday, December 7, 2025

10:00 AM

Darkness Holds It All

December 7, 2025

Gathering Music Olga Martinez, Director of Music Ministry
& Chris Milkins, Musician

Announcements Peter Brown, Worship Associate

Coffee Hour Connection The Caring Network

Ringling of the Chime

Welcome Peter Brown

Congregational Greeting

Opening Hymn #55 *Dark of Winter*

Call to Community & Chalice Lighting Rev. Ann Kadlecek

Universal mystery,
Guide us away from the desire to
Shine light in all the corners.
Teach us to embrace the night.

By Jennifer Gracen (adapted)

Song of Darkness by Meg O'Dell Small Ensemble

Story *The Dark is Friendly* by Jade Maitre Rev. Ann Kadlecek

Joys and Sorrows Jim Chicoine & Debbie Rodriguez

Sung Response #123 *Spirit of Life*

Worship Associate Reflection Peter Brown

Reading by Rainer Maria Rilke Rev. Ann Kadlecek

Sermon Rev. Ann Kadlecek

Music *Widening* Olga Martinez & Chris Milkins
by Allie Picketts

Offering Peter Brown

Offertory

Closing Song *Honor the Dark* by Lea Morris

Benediction Rev. Ann Kadlecek

Chalice Extinguishing

*We extinguish this flame
but not the light of truth,
The warmth of community,
or the fire of commitment.
These we carry in our hearts
until we are together again.*

Flowers are given by Barb & Chuck Manning.
~ *In memory of Chuck's dad, Clarence R. Manning.* ~

*Thank you to our guest musicians, Alexis Sanborn, Chris
Whittaker, and Rich Baldes.*

Musicians and other service leaders are grateful for your appreciation.
However, we ask that you refrain from audible applause during the service.
Thank you!

ANNOUNCEMENT FOR SUNDAY, DECEMBER 7th:

From the Congregational Life Team:

Check out our Holiday Craft Sale in Channing Hall after today's service! Handmade and gently used items make great gifts! A fresh supply of Soups and Hot Fudge was also made just for YOU! And don't forget the Pies-- Apple, Apple Cranberry and Pumpkin waiting for your purchase. Cash or check only. We appreciate your enthusiastic participation in this Albany UU Fundraiser.

From Music Ministry:

The annual Albany UU Holiday Music Jam will take place on Sunday, Dec. 21 during coffee hour! We play Chanukah and Christmas music from the books Festive Strings and More Festive Strings, by Joanne Martin. Music will be available in treble, alto, and bass clefs. The event is multi-generational, multi-level, and multi-instrumental. Bring your music stand! If the instrument you play needs chord notation (guitar, accordion, etc.), if you need Bb/Eb/F notation, or if you would like more information, please contact Anne Marie Haber.

From Programs for Children & Youth and The Social Justice Team:

Programs for Children and Youth and the Social Justice Team thank you for your incredible contributions to their soap and washcloth drive to benefit Grassroot Givers and their clients. The original goal of 100 was more than doubled, with 210 sets of washcloths and soap wrapped up into attractive packages by the children and youth last Sunday, plus 42 additional bars of soap. Programs for Children and Youth and Social Justice Team thank you so much for your generosity and support.

From the Administrator Office:

We have a new Breeze Directory! This directory allows anyone who chooses to **OPT-IN** to see the name, email address, and phone number of anyone else who chooses to **OPT-IN**. If you would like to join the Breeze Directory, and are already a user in Breeze, please fill out **OPT-IN form** using the **QR code below**. If you are not a user in Breeze and would like to opt-in to the directory, please contact Sophia Garder, Church Administrator, at sgarder@albanyuu.org.



From The Stewardship Team:

The Stewardship Team had a very productive meeting on Nov. 17th. We are pleased to announce that the Team will be led by Alison Hart and Amie Jamieson. The team identified several new roles that need to be filled, and we hope that you will come and learn more about this important volunteer opportunity. The meeting will be in Room 3/4 on December 8th at 7:00 PM. It will also be on zoom (link in the newsletter).

From Music Ministry:

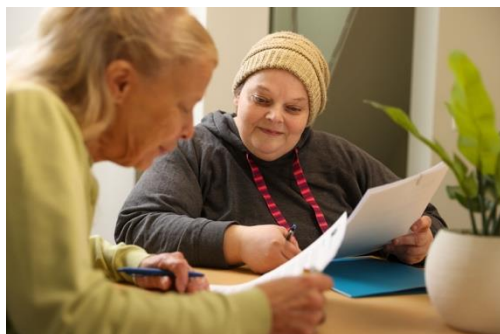
Join us for community caroling on Sunday, December 14th! We'll meet in the lobby at 12:45 PM and head out at 1:00 PM to share music, laughter, and holiday spirit to members of our community in their homes. Help make the season brighter for everyone around us! Email Olga at omartinez@albanyuu.com for questions!

Share the Plate with IPH in December

This month, Albany UU will share half of the collection plate with **IPH (formerly known as Interfaith Partnership for the Homeless)**. IPH serves unhoused and at-risk individuals and families, many of whom have complex mental health, substance use, and other health challenges. Its programs benefit more than 2,000 individuals and families each year, primarily in the city of Albany.

At locations on Sheridan Avenue, IPH offers:

- **Emergency Shelter**, providing a safe place to stay as well as housing-focused case management.
- **Community Connections**, with food and meals, clothing, laundry, showers, lockers, mailboxes, case management, health-related referrals, and housing assistance offered during the day.
- **Permanent, supportive housing** to individuals and families experiencing homelessness.



Your contribution made by cash, text, online or check made out to Albany UU will be split between Albany UU and IPH, unless you tell us otherwise. If you want your entire contribution to go towards your annual pledge, write “pledge” on the memo line of your check. If you want your entire contribution to go to IPH, write “all to IPH” on the memo line.

Learn more about IPH at <https://www.iphny.org>.

CARING NETWORK

The Caring Network is a group of AUU volunteers who provide encouragement and short-term support to fellow congregants and friends of the congregation with phone calls, rides, meals, cards, visits, and similar services. We also provide a holiday “goodie bag” and a spring flowering plant which are delivered in person to AUU shut-ins and people who have gone through some significant personal illness or loss. We are always looking for volunteers to join us in this very rewarding opportunity. Please indicate below any opportunities that you are able to provide.

NAME _____

PHONE _____

EMAIL _____

____ Provide a ride
calls

____ Make phone

____ Help with holiday gift bags
ins

____ Visiting shut-

____ Help with potting Spring plants

Provide a meal

____ Delivering gift bags or plants

____ Send cards

Turn this in at the Welcome Table, the Office, Barb Manning or Sharon Babala.

Honor the Dark

Words and music by Lea Morris

Part 1

Musical score for 'Honor the Dark' Part 1, measures 1-8. The score is written in treble clef, key of B-flat major (two flats), and 4/4 time. It includes lyrics and a repeat sign at the end of measure 8.

Hon - or the dark as you do the light. Re-

- ceive the gifts that come to us by

day and by night. I choose to hon - or the dark, un -

- cer - tain - ty and change. De - liv - er us from fear un - til

on - ly love re - mains.

Honor the Dark

Words and music by Lea Morris

Part 1

Musical score for 'Honor the Dark' Part 1, measures 1-8. The score is written in treble clef, key of B-flat major (two flats), and 4/4 time. It includes lyrics and a repeat sign at the end of measure 8.

Hon - or the dark as you do the light. Re-

- ceive the gifts that come to us by

day and by night. I choose to hon - or the dark, un -

- cer - tain - ty and change. De - liv - er us from fear un - til

on - ly love re - mains.

Honor the Dark

Words and music by Lea Morris

Part 2

Musical notation for Part 2 of 'Honor the Dark'. The first staff is a treble clef with a key signature of two flats (Bb, Eb) and a common time signature. The melody consists of a half note G4, a quarter note A4, a quarter note Bb4, a half note C5, a quarter note D5, a quarter note E5, and a half note F5. The lyrics 'Hon - or the dark Hon - or the dark' are written below the staff. The second staff is a treble clef with a key signature of two flats (Bb, Eb) and a common time signature. The melody consists of a half note G4, a quarter note A4, a quarter note Bb4, a half note C5, a quarter note D5, a quarter note E5, and a half note F5. The lyrics 'Hon - or the dark Hon - or the dark' are written below the staff. The staff ends with a double bar line.

Hon - or the dark Hon - or the dark

[1]
Hon - or the dark Hon - or the dark

Honor the Dark

Words and music by Lea Morris

Part 2

Musical notation for Part 2 of 'Honor the Dark'. The first staff is a treble clef with a key signature of two flats (Bb, Eb) and a common time signature. The melody consists of a half note G4, a quarter note A4, a quarter note Bb4, a half note C5, a quarter note D5, a quarter note E5, and a half note F5. The lyrics 'Hon - or the dark Hon - or the dark' are written below the staff. The second staff is a treble clef with a key signature of two flats (Bb, Eb) and a common time signature. The melody consists of a half note G4, a quarter note A4, a quarter note Bb4, a half note C5, a quarter note D5, a quarter note E5, and a half note F5. The lyrics 'Hon - or the dark Hon - or the dark' are written below the staff. The staff ends with a double bar line.

Hon - or the dark Hon - or the dark

[1]
Hon - or the dark Hon - or the dark